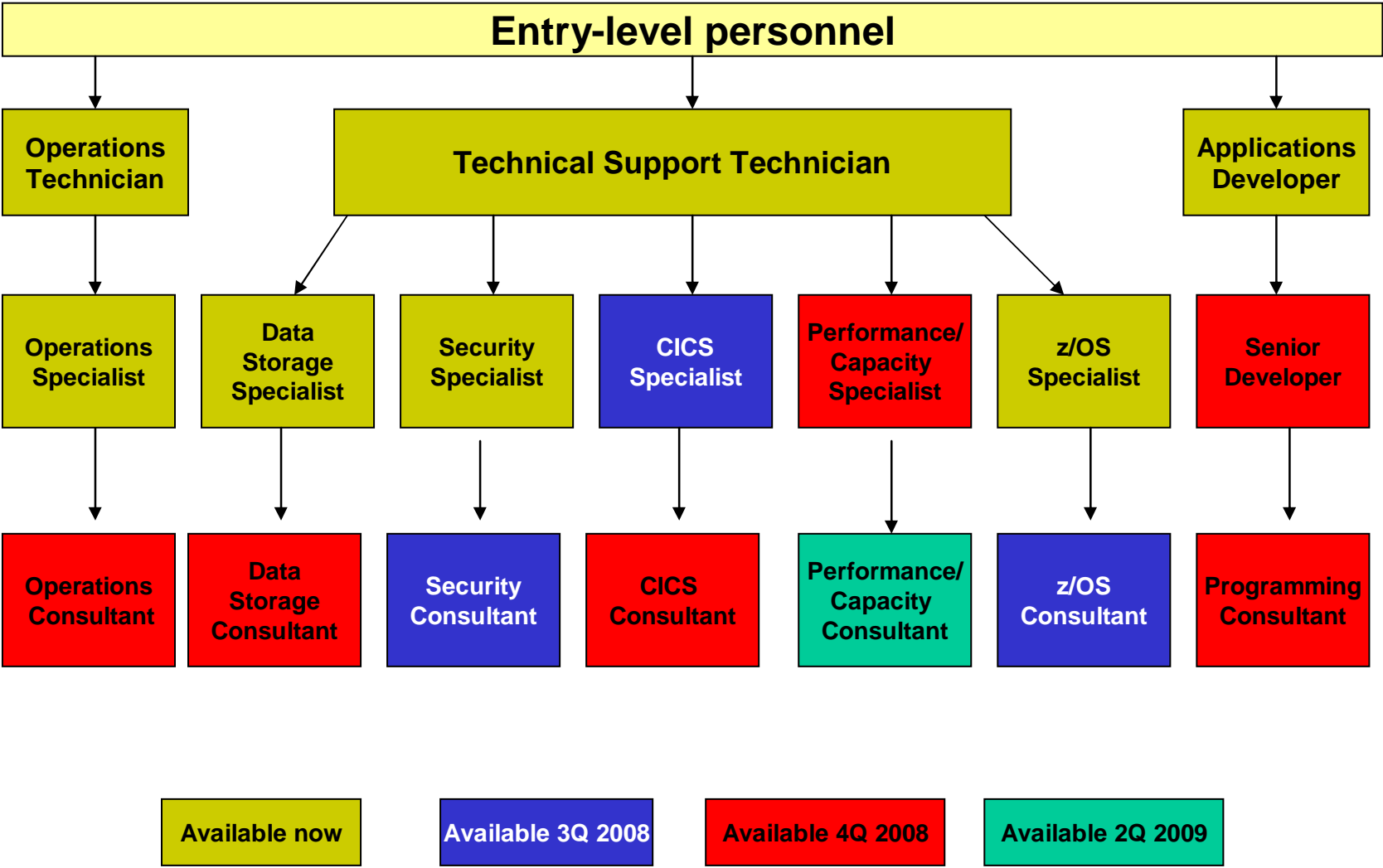
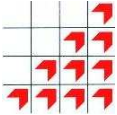


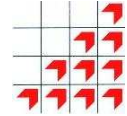
# **BCS MTP™** **(Mainframe Technology Professional)** **Examination & Qualifications**



# BCS MTP development status

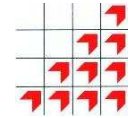


# BCS MTP – what is it?



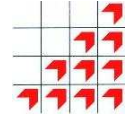
- A **customer-driven** qualification programme
- A series of examinations designed to test and demonstrate the **ability** of the candidates to do their particular jobs, not just their ability to absorb information
- Under the governance of the **British Computer Society**, and formally incorporated into the BCS Qualifications portfolio in April 2007
- Working in co-operation with **Guide Share Europe**
- Supported by an **ever-growing** community of organisations with mainframe-based computing environments
- The range of disciplines covered will expand in line with customers' requirements

# BCS Qualifications Portfolio



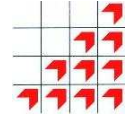
- **Setting the standard** – as the chartered professional body for IT professionals, BCS and ISEB qualifications set the highest standard of best practice
- **Internationally recognised qualifications** – BCS is the only Chartered Engineering Institution for IT professionals that can award internationally recognised professional qualifications
- At its highest level, the BCS Professional Examinations are at the academic level of a UK University honours degree, and acknowledge practical experience and academic ability.

# Why should you? (as an organisation)



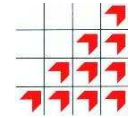
- Contractual requirements
- Skills measurement & verification
- Staff development
- Resource management
- Effective recruitment
- Customer confidence

# Why should you? (as an individual)



- Planned career development
- Differentiation
- Demonstration of skills & commitment

# Website & Exam Interface 'look'



BCS Mainframe Technology Professional™ Qualifications

BCS MTP  
The mainframe standard

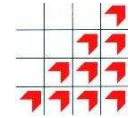
*What?* *Why?*

*How?* *When?*

In the IT Services industry it is vital to not only have the right skills, but also to prove that you have them. These examinations do just that.

Alan Fretten,  
Head of Mainframes,  
BT Plc

# Exam Interface Improvements



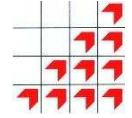
## The environment

- 'User-friendly' interface
- Results management
- Certificate distribution

## 'Exam in a Box'

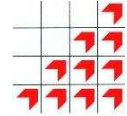
- Download to local server
- Exam taken on local server/secure local wireless network
- Remote z/OS access
- Upload to BCS server on completion

# Candidate online support



- Private section of website
- Update their own details
- View previous results/certificates received

# The examinations



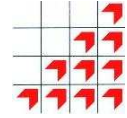
## The questions

- Multiple-choice in varied levels of difficulty
- Complex questions in varied levels of difficulty
- Practicals – hands-on z/OS exercises

## The environment

- Secure
- Online marking
- Random checks on marking
- Independent non-technical invigilators

# The marking



## The marking

- Some automatic marking
- Some answer assessment (essay type)
- Some checking in z/OS

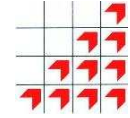
## The markers

- Subject specialists
- Accredited by BCS

## Marking objectives

- Reduce marking time without compromising MTP objectives

# New 'requested' exams in pipeline



- Level 1 zAuditors (4 Q 2008)
- Level 2 zAuditors (2 Q 2009)
- Level 1 zArchitects (4 Q 2008) [requested by IBM in USA]